

National Geographic Information Institute (NGII)

As Korea's national agency for Geospatial Information, NGII under MOLIT surveys, produces, and manages precise data of the national territory.

HISTORY

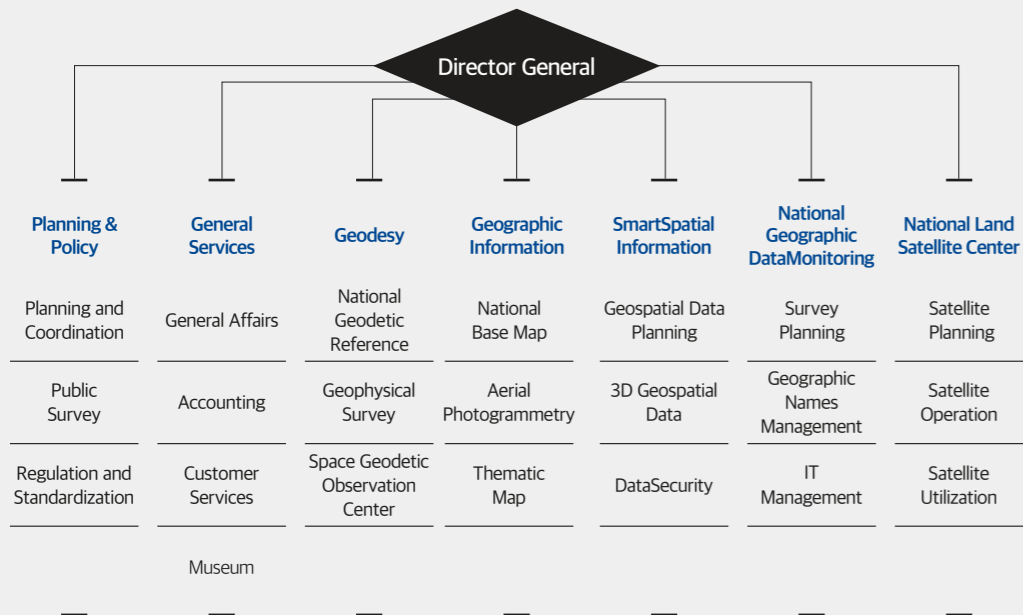


Today's Mapping
Tomorrow's Future

NATIONAL GEOGRAPHIC INFORMATION INSTITUTE

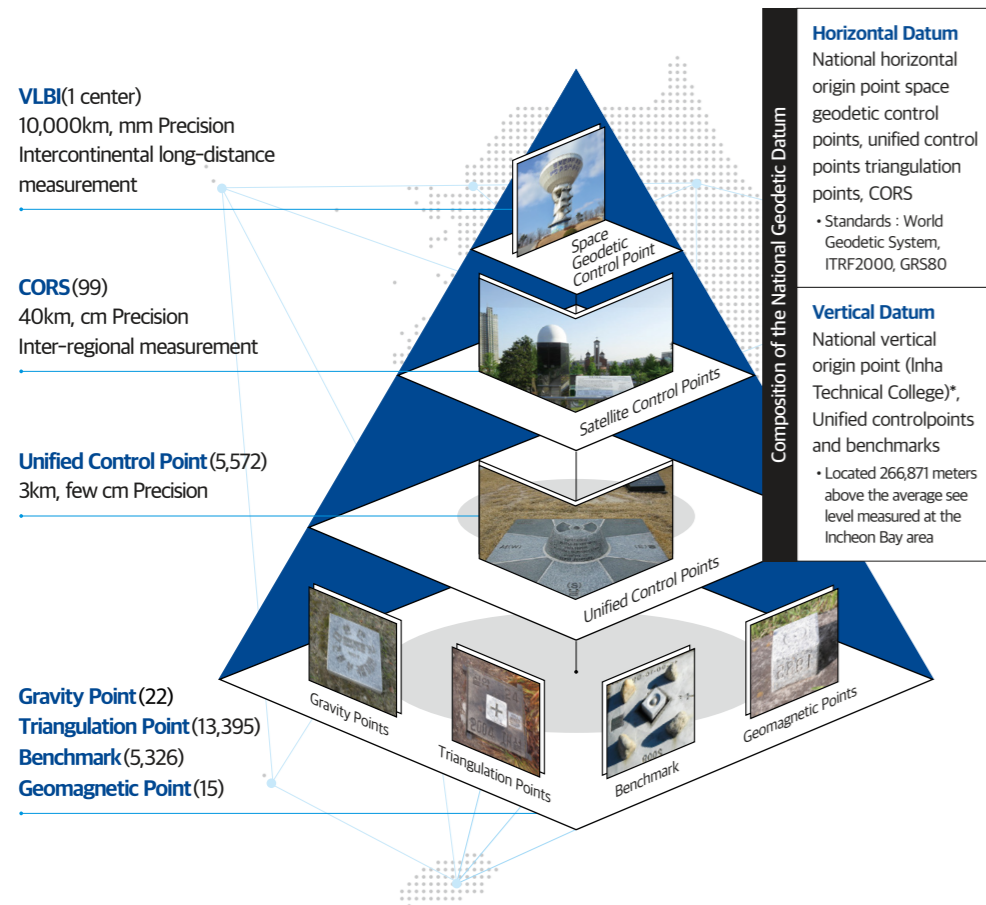


ORGANIZATIONAL STRUCTURE



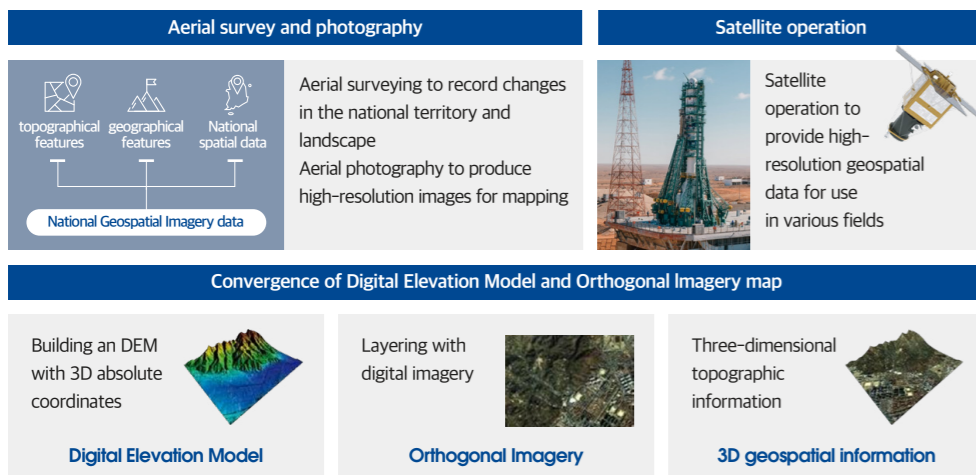
National Geodetic Datum Management

The NGII oversees the national geodetic reference frame and operates the state-of-the-art surveying infrastructure to provide accurate positioning services in various fields.



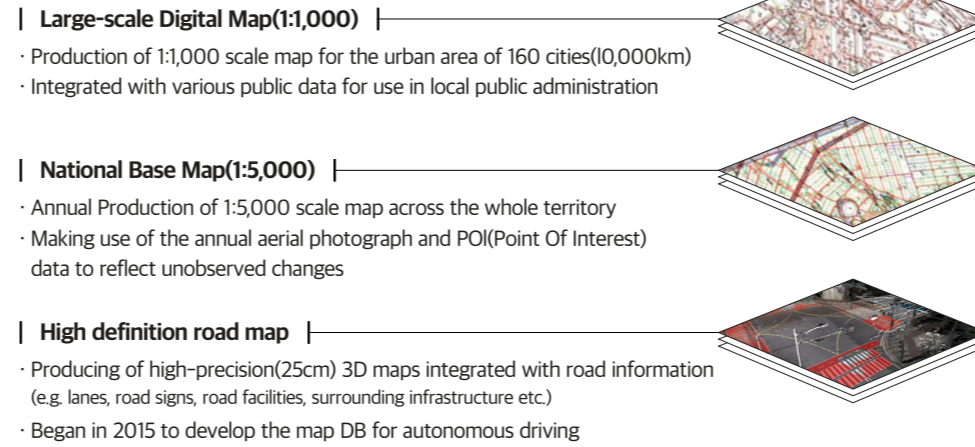
Geospatial Monitoring & Image Production

The NGII utilizes aerial photography and satellites to monitor changes in the national territory and produce high-resolution image data for the national base map and DEM development.



Mapping

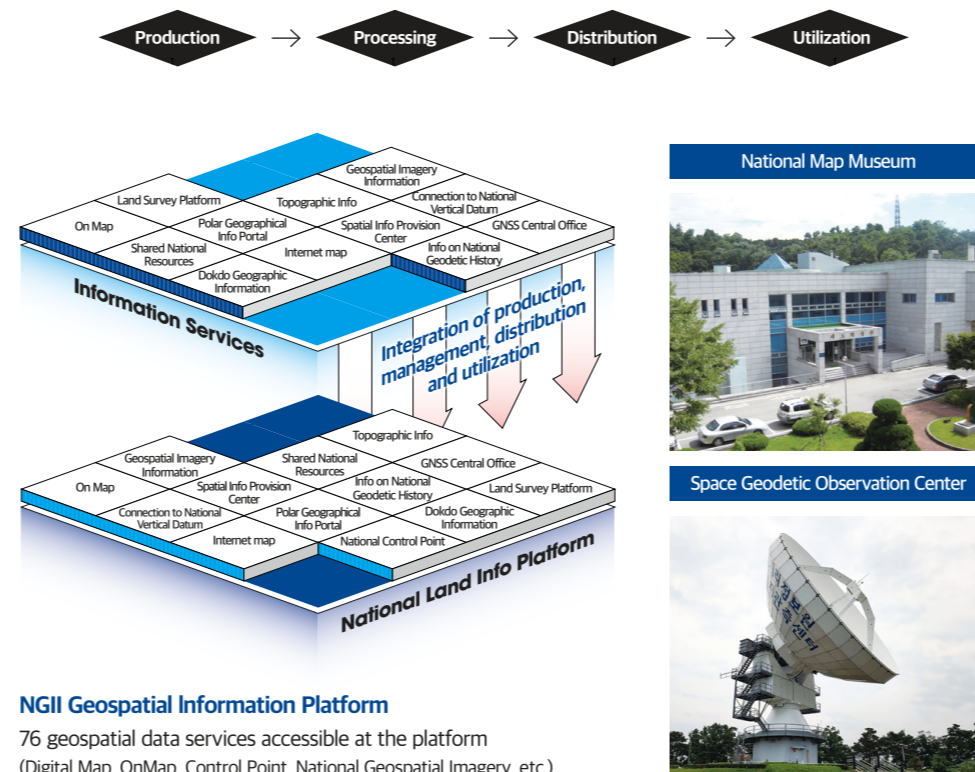
The NGII produces maps in various scales, dimensions, and formats to meet diverse map use demands.



Public Services

The NGII provides various public services through its operation of the NGII Geospatial Information Platform, the National Map Museum and the Space Geodetic Observation Center.

Flow of NGII's Spatial Information Service



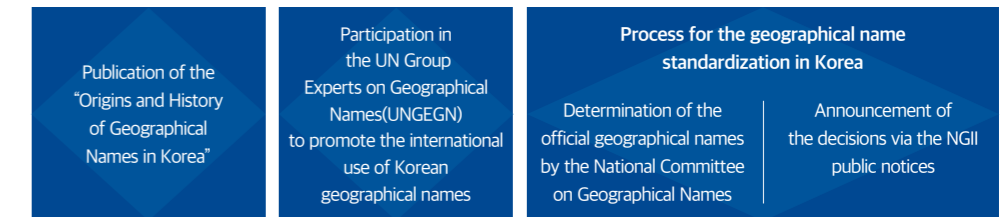
International Cooperation

The NGII pursues various international cooperation to share Korea's geospatial knowledge and experience with the world.



Geographical Name Standardization

The NGII leads the standardization of geographical names in Korea and around the world to deliver reliable geographic information for policymaking, research and international cooperation.



Digital Twin

The NGII is building the national database of high-precision 3D maps to develop the national digital twin platform and for use in various fields and industries.

